

T600

HIGH SPEED VARIABLE DATE PRINTING SYSTEM

- ◆ WIRELESS KEYBOARD AND MOUSE CONTROL
- ◆ FLEXIBLE AND EFFICIENT SPLICING MODE
- ◆ CALCULATE PRINTING COSTS IN REAL TIME
- ◆ ANTI-COUNTERFEITING TRACE DATA PRINTING
- ◆ GS1 INTERNATIONAL MEDICINE MONITOR CODE



◆ MORE RELIABLE AND PROFESSIONAL HARDWARE

Use of the American TI's AM3358 Industrial Grade CPU Xilinx Spant6 Industrial Grade FPGA. More stable, reliable and anti-interferences in various conditions rendering the printing a unique experience. The print engine uses TIJ dedicated ASIC chip, a perfect match for a variety of original and licensed HP Inks. Professional Cartridge preheat algorithm to ensure optimum print quality at high and low temperatures and environments.

◆ MORE POWERFUL AND SMARTER SOFTWARE

Intelligent embedded Linux operating system provides a professional and more user friendly interface. Embedded powerful drop consumption algorithm that allow instant calculation of cost per print. Powerful variable functions of the 2D Code to meet the today growing customers' demand. Efficient and flexible variable database functions to meet various applications requirements for product traceability.

Codpad

Professional TIJ inkjet printer manufacturer
DYNAMIC TRACEABILITY DATABASE HIGH SPEED PRINTING SOLUTION
OEM ODM SDK ONE-STOP SERVICE

- ◆ SUPPORT UP TO 6 SENSORS, CONFIGURE THE TRIGGER MODE AT WILL
- ◆ MAXIMUM SUPPORT 6 PRINT HEADS, THE NUMBER OF A PRINT HEAD CAN BE CONFIGURED
- ◆ TWO ROWS OF NOZZLES ALTERNATE MODE TO EXTEND INK CARTRIDGE LIFE
- ◆ MULTIPLE SPLICING MODES WITH A MAXIMUM PRINTING HEIGHT OF 76.2MM
- ◆ 10-INCH INDUSTRIAL TOUCH SCREEN BRINGS EXCELLENT HUMAN INTERACTION EXPERIENCE
- ◆ STEPLESS FREQUENCY CONVERSION FUNCTION, THE PRINT WIDTH CAN BE ADJUSTED AT WILL
- ◆ ANTI-COLLISION REBOUND ASSEMBLY TO PREVENT ACCIDENTAL DAMAGE TO THE PRINT HEAD



Technical Parameters

Printing	Print Distance	2mm to 3mm
	Nozzle Type	Thermally Foamable Head TIJ2.5
	Print Height	Minimum 1mm / Maximum 76.2mm
	Ink Type	Aqueous or Solvent based 42ml Cartridges CIS S
	Print Accuracy	Vertical :100DPI / 150DPI / 300DPI Horizontal:40~2400DPI
	Ink Color	Black, White, Red, Yellow, Blue, Green, Stealth, UV readable
	Print Speed	152.4 M/min at 300DPI, 304.8M/min at 150DPI, 381M/min at 120DPI, 508M/min at 90DPI
	Cartridge Chip	Contactless RFID tags for automatic identification and recording ink parameters and consumptions
	Printable Substrates	Cardboard, Plastic, Metal, Cables, Electronic components, Auto Parts, Industrial Chemical packaging, Pharmaceuticals and more
Print Contents	Multi language Characters, 2DCode, Barcodes, Images, Serial Numbers, Date, Counters, Variable Database, RS232 to receive real data to print	
Machine	Body Material	Industrial Stainless steel
	Operating System	Embedded Linux operating system
	Power Supply	110 - 230 Volts AC 50-60Hz input
	Communication Interface	Network Interface USB/RJ45 to RS-232, TCP/IP
	Working Environment	Max Temp 55C Degrees / Humidity 30 to 70% RH
	Dimension	Controller 274mm x 165.4mm x 88mm / Head Holster 112mm x 79mm x 103mm
	Main Hardware	American TI A M3358 industrial grade CPU/USA Xilinx Spant6 industrial grade FPGA / TIJ dedicated ASIC chip
	External Interface	Photocell, Encoder, External Reverse/Inverse control, Alarm outputs, Serial Number external Reset, External data Selection
	Supported Languages	Italian, English, French, Finnish, Arabic, Danish, German, Russian, Norwegian, Portuguese, Spanish, Japanese...



Packing carton



Medicine



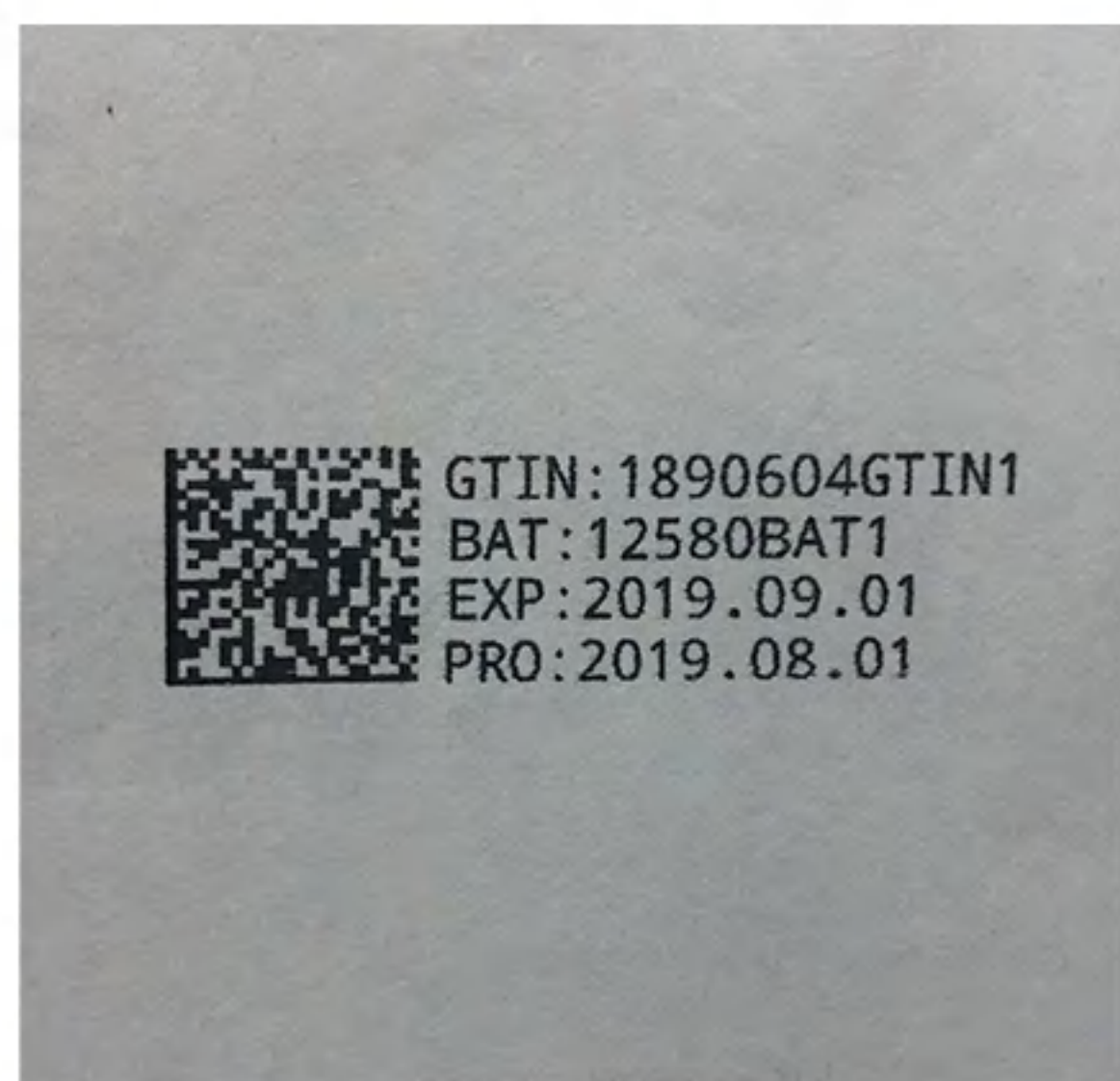
Furniture and wood



Food packaging



PET plastics



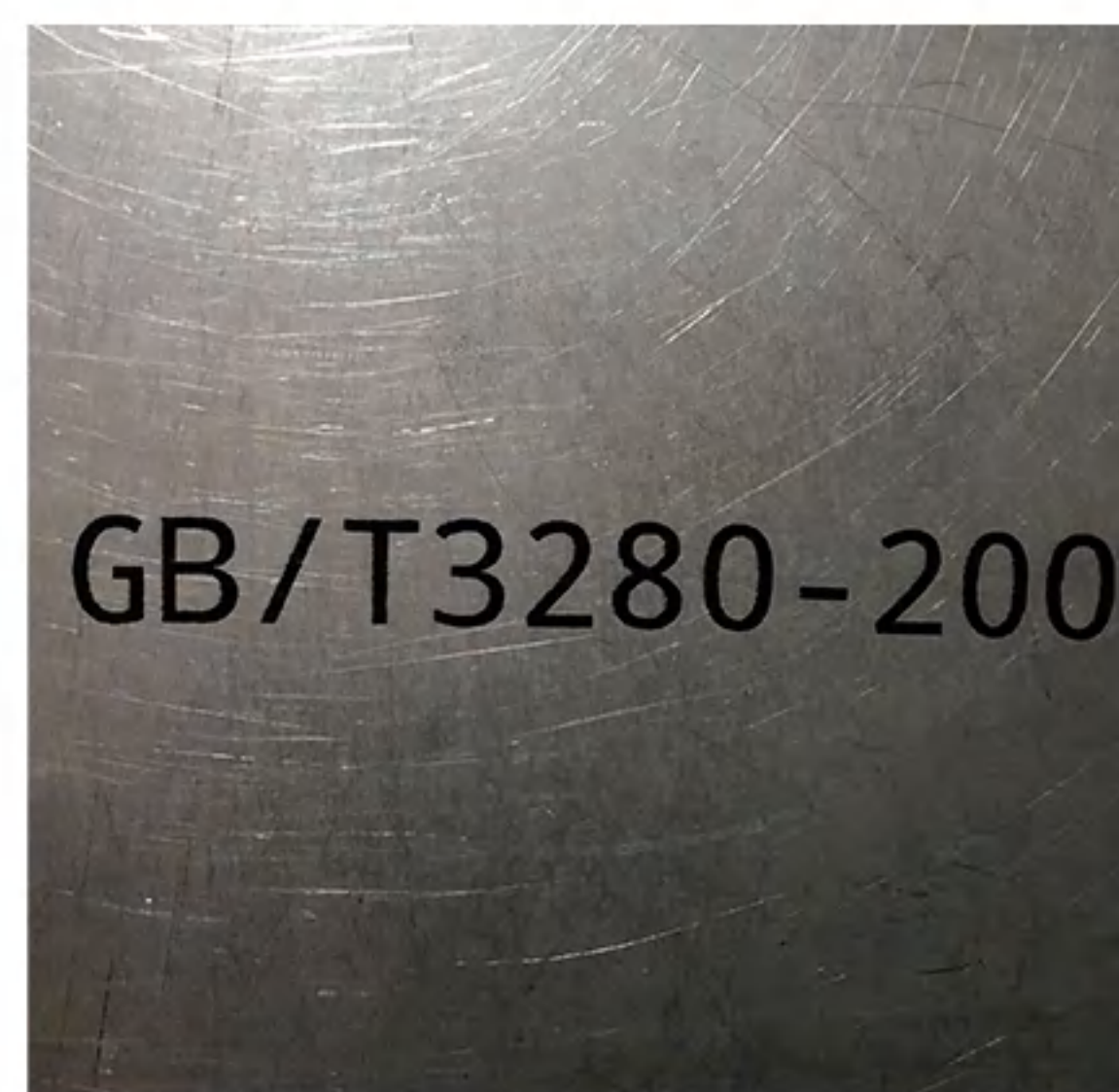
GS1 Data Matrix



Dynamic security barcode



Multi- group printing



HD bold font



Multi-dot font

Codpad

Guangzhou Codpad e-tech Company Limited

TEL: (+86)20-81631033

E-mail: service@docod.com.cn

Fax number: (+86)20-81631033

Web: www.codpad.com

Add: Room 302, Building 3, NO.9, Hejing Road, LiWan District, Guangzhou, China