

# T210

HIGH SPEED VARIABLE DATE PRINTING SYSTEM

- ◆ GS1 DataMatrix
- ◆ Network remote centralized management
- ◆ Production line alarm light control
- ◆ Calculate printing costs in real time
- ◆ Wireless keyboard and mouse control
- ◆ Anti-counterfeiting trace data printing
- ◆ Printing speed up to 240m/min



## ◆ More reliable and professional hardware

Use of the American TI's AM3358 Industrial Grade CPU, Xilinx Spant6 Industrial Grade FPGA. More stable, reliable and anti-interferences in various conditions rendering the printing a unique experience. The print engine uses TIJ dedicated ASIC chip, a perfect match for a variety of original and licensed HP Inks. Professional Cartridge preheat algorithm to ensure optimum print quality at high and low temperatures and environments.

## ◆ More Powerful and Smarter software

Intelligent embedded Linux operating system provides a professional and more user friendly interface. Embedded powerful drop consumption algorithm that allow instant calculation of cost per print. Powerful variable functions of the 2D Code to meet the today growing customers' demand. Efficient and flexible variable database functions to meet various applications requirements for product traceability.

**Codpad**

Professional TIJ inkjet printer manufacturer  
Dynamic traceability database high speed printing solution  
OEM ODM SDK one-stop service

- ◆ Double nozzles seamless stitching and independent installation
- ◆ Easily match the weighing machine, packing and paging machine
- ◆ Snap-on cartridge, more simple and reliable
- ◆ Adjustable inkjet concentration to meet different needs
- ◆ Support large capacity ink bags and continuous ink supply system
- ◆ Multiple brackets along with various installation methods to choose



## Technical Parameters

Machine	Body Material	Industrial Stainless steel
	Operating System	Embedded Operating System
	Comm. Interface	Network Interface USB/RJ45 to RS-232
	Working Environment	Max Temp 55C Degrees / Humidity 30 to 70% RH
	Power Supply	100 – 240 Volts AC 50-60Hz input / 30Volts 4Amps DC output
	Dimension Controller	202mm x 119mm x 61.2mm / Head Holster 112mm x 79mm x 103mm
	Main Hardware	American TI A M3358 industrial grade CPU/USA Xilinx Spant6 industrial grade FPGA / TIJ dedicated ASIC chip
	Languages	Italian, English, French, Finnish, Arabic, Danish, German, Russian, Norwegian, Portuguese, Spanish, Japanese.
External Interface	Photocell, Encoder, External Reverse/Inverse control, Alarm outputs, Serial Number external Reset, External data Selection.	

Printing Head	Nozzle Type	Thermally Foamable Head TIJ2.5
	Print Distance	2mm to 5mm
	Print Accuracy	150DPI / 300DPI / 600DPI
	Print Speed	120m/min at 300DPI
	Print Height	Minimum 1mm / Maximum 25.4mm
	Ink Type	Aqueous or Solvent based 42ml Cartridges CIS S
	Ink Color	Black, White, Red, Yellow, Blue, Green, Stealth, UV readable
	Cartridge Chip	Contactless RFID tags for automatic identification and recording ink parameters and consumptions
	Printable Substrates	Cardboard, Plastic, Metal, Cables, Electronic components, Auto Parts, Industrial Chemical packaging, Pharmaceuticals and more.
	Print Contents	Multi language Characters, 2DCode, Barcodes, Images, Serial Numbers, Date, Counters, Variable Database, RS232 to receive real data to print



Packing carton



Medicine



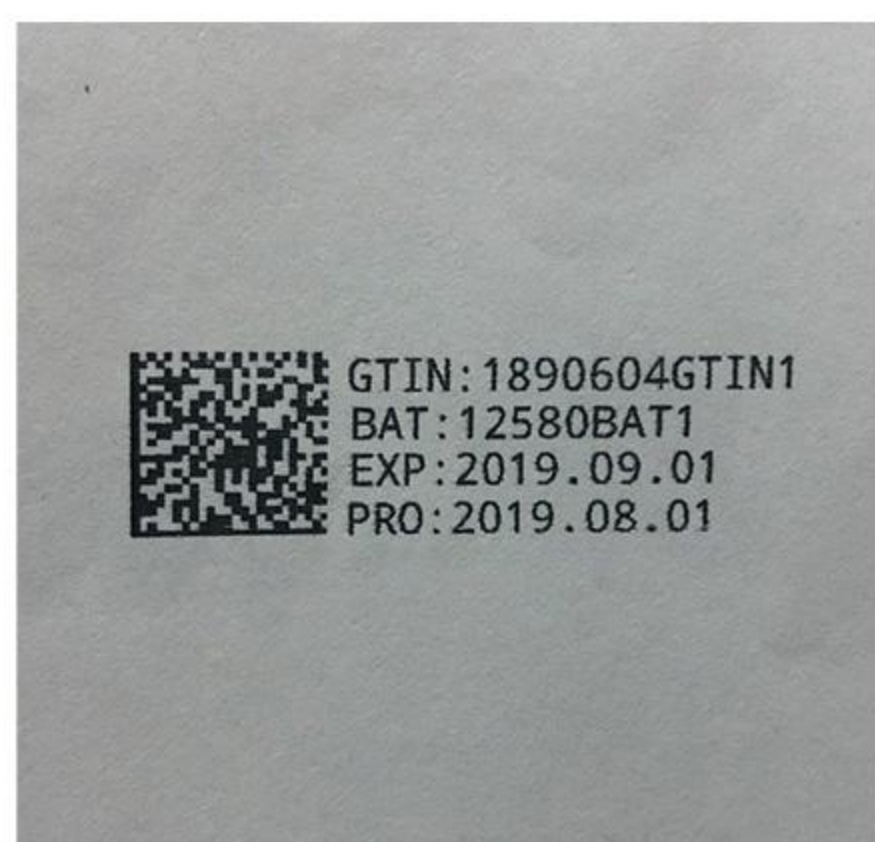
Furniture and wood



Food packaging



PET plastics



GS1 Data Matrix



Dynamic security barcode



Multi- group printing



HD bold font



Multi-dot font

# Codpad

Guangzhou Codpad e-tech Company Limited

TEL: (+86)20-81631033

Fax number: (+86)20-81631033

Add: Room 302, Building 3, NO.9, Hejing Road, LiWan District, Guangzhou, China

E-mail: [service@docod.com.cn](mailto:service@docod.com.cn)

Web: [www.codpad.com](http://www.codpad.com)